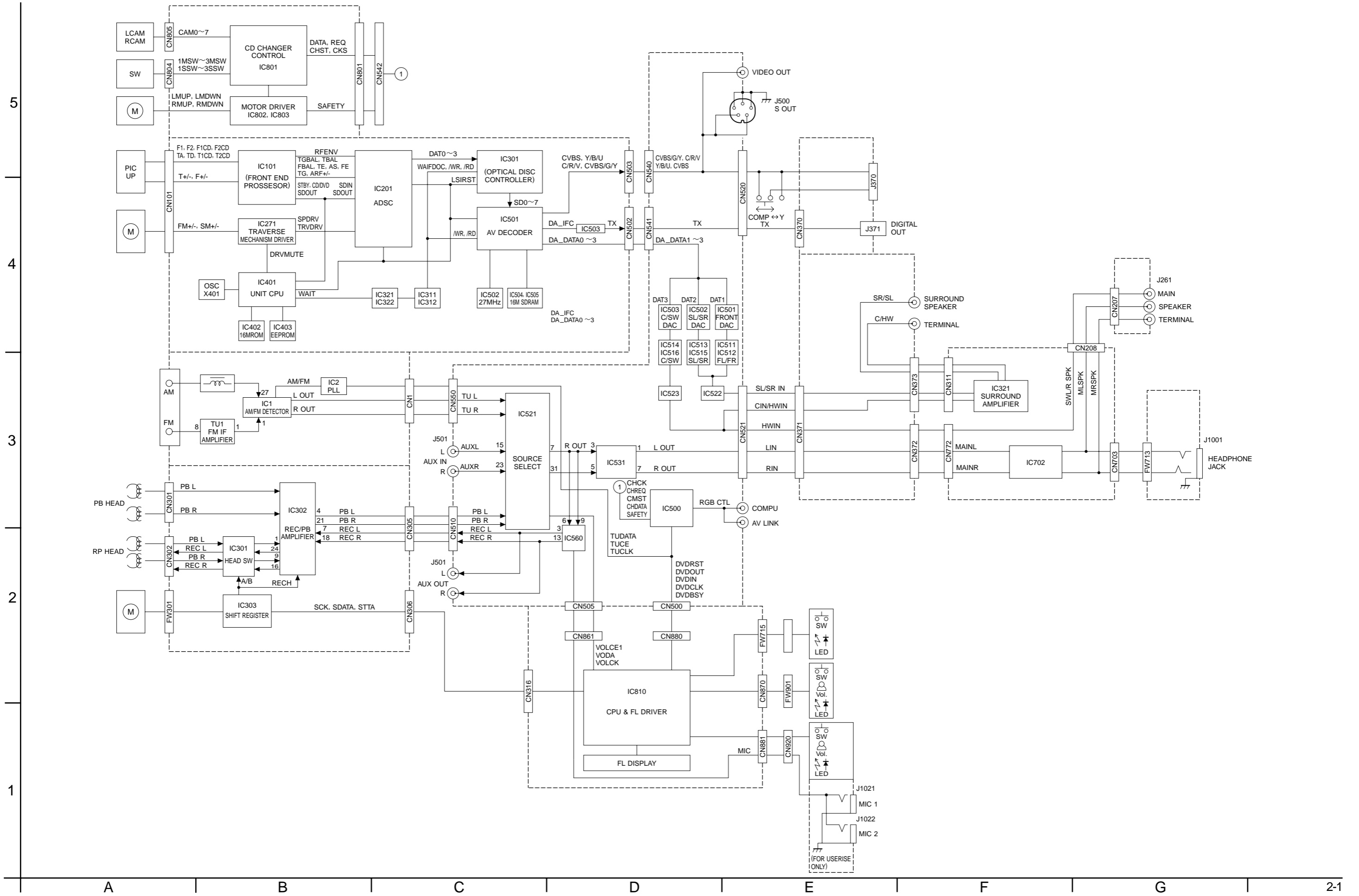


In regard with component parts appearing on the silk-screen printed side (parts side) of the PWB diagrams, the parts that are printed over with black such as the resistor (■), diode (▣) and ICP (●) or identified by the "△" mark nearby are critical for safety. When replacing them, be sure to use the parts of the same type and rating as specified by the manufacturer. (Except the J and C version)

Block diagram



Standard schematic diagrams

System control section

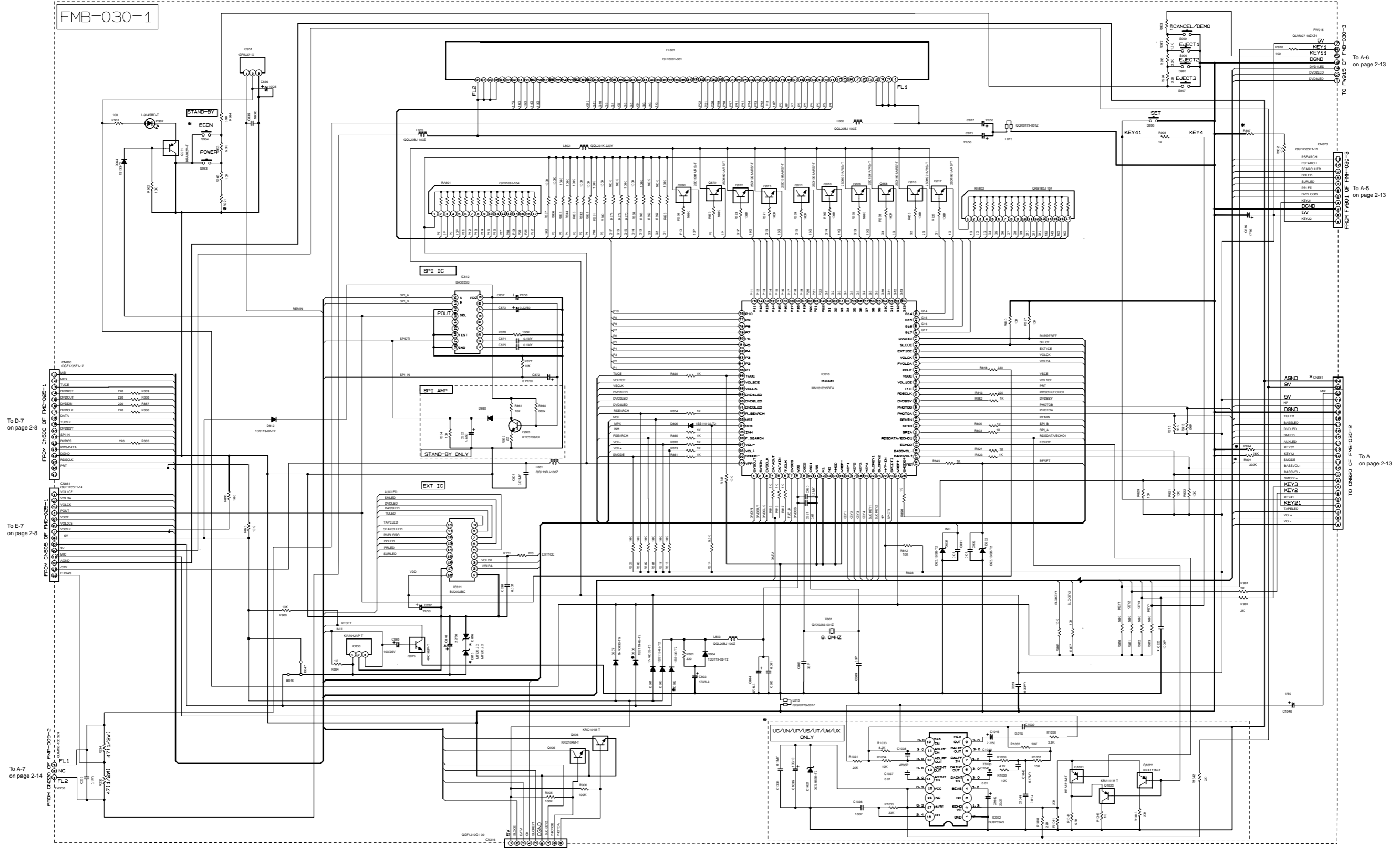
5

4

3

2

1



To D-7 on page 2-8

To E-7 on page 2-8

To A-7 on page 2-14

To A-6 on page 2-13

To A-5 on page 2-13

To A-13 on page 2-13

* MARK

REF NUMBER	J/C	B/E/EN	EE	A	US/UN/UP	UG	UJ	UT	UW	UX
RG21	330K	330K	330K	330K	330K	330K	330K	330K	330K	330K
RB97	75K	330K	330K	330K	75K	75K	75K	75K	75K	75K
RB94	75K	75K	330K	75K	75K	330K	75K	18K	330K	18K
RB94	75K	330K	75K	75K	330K	75K	18K	330K	18K	18K
BB45/BB47	BB47	BB46	BB46	BB46	BB47	BB47	BB47	BB47	BB47	BB47
BB54	NONE	Q5W0674-001Z	Q5W0674-001Z	Q5W0674-001Z	NONE	NONE	NONE	NONE	NONE	NONE
CB25	NONE	USE	NONE	NONE	NONE	NONE	NONE	USE	NONE	NONE
DB02/DB06	NONE	USE	USE	USE	NONE	NONE	NONE	NONE	NONE	NONE
CB40/DB15/DB16	NONE	USE	USE	USE	NONE	NONE	NONE	NONE	NONE	NONE
CN85	GGF1210G1-22	GGF1210G1-22	GGF1210G1-22	GGF1210G1-22	GGF1210G1-24	GGF1210G1-24	GGF1210G1-24	GGF1210G1-24	GGF1210G1-24	GGF1210G1-24

NOTES

- VOLTAGES ARE DC-MEASURED WITH A DIGITAL VOLT METER OR OSCILLOSCOPE WITHOUT INPUT SIGNAL. CONDITION — AUX MODE, VOL. MIN. BASS OFF.
- UNLESS OTHERWISE SPECIFIED:
 - RESISTORS ARE 1/4W ± 5% CARBON RESISTOR.
 - ALL RESISTANCE VALUES ARE IN OHMS.
 - ALL CAPACITORS ARE CERAMIC CAPACITOR OR MYLAR CAPACITOR.
 - ALL CAPACITANCE VALUES ARE IN PPF (PPF).
 - ALL INDUCTANCE VALUES ARE IN MH (MH).
 - ALL CAPACITORS ARE SHOWN IN THE FORM OF CAPACITANCE (PF)/RATED VOLTAGE (V).
 - ALL DIMENSIONS ARE IN MM.

Key input section

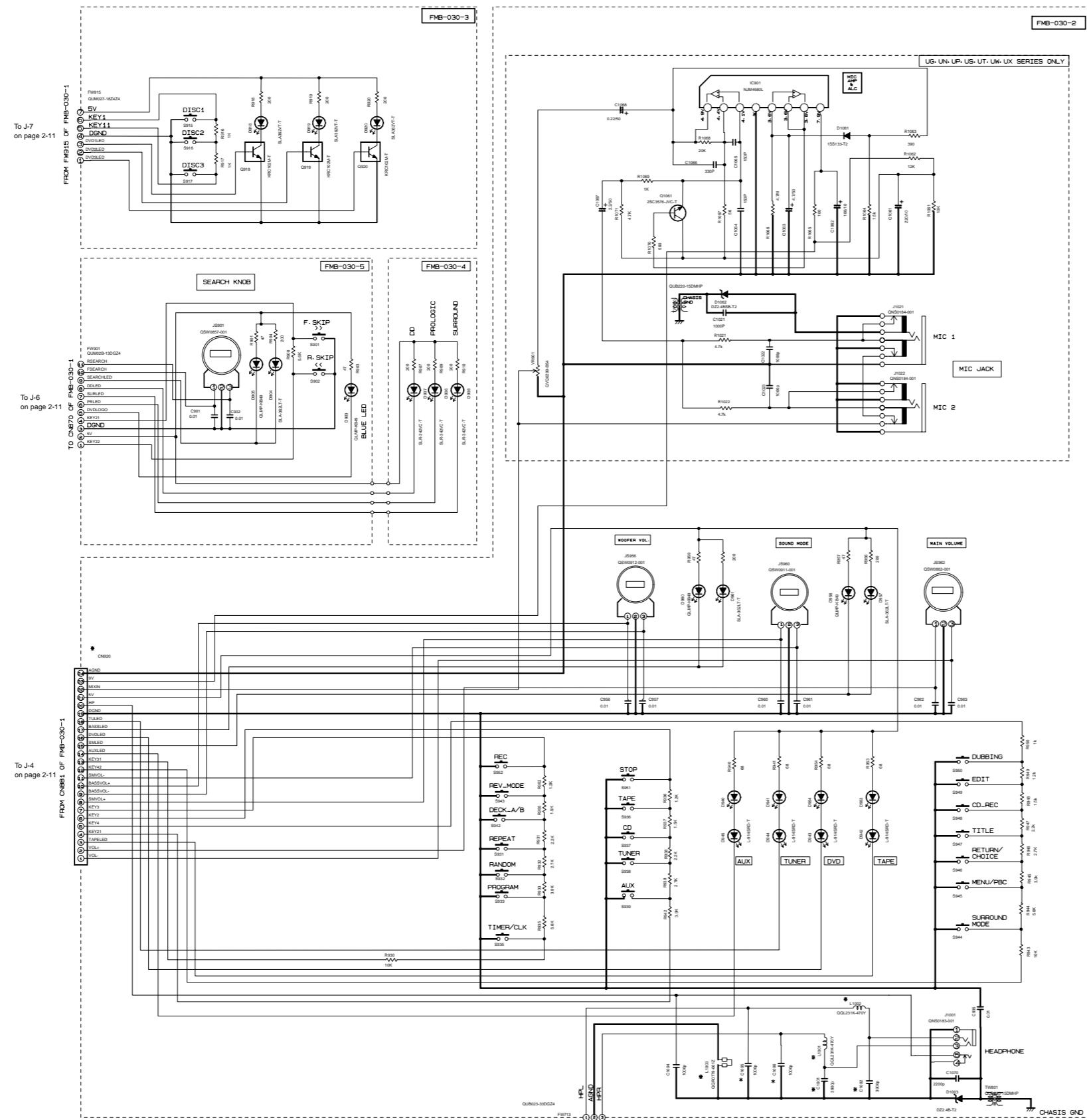
5

4

3

2

1



To J-7 on page 2-11

To J-6 on page 2-11

To J-4 on page 2-11

* MARK

MODEL	MX-DVA9	MX-DVA9R	CA-MXDVA9R	CA-MXDVA9			
REF. NUMBER	J/C	EE	B/E/EN	A	UG/UN/UP US/LX/LX	UJ	UT
L1001/L1002	B940/B941	USE	USE	USE	B940/B941	B940/B941	USE
C1001/C1002	NONE	USE	USE	USE	NONE	NONE	USE
C1005/C1006	USE	NONE	NONE	NONE	USE	USE	NONE
L1003	GQL231K-2R2Y	GGR0779-001	GGR0779-001	GGR0779-001	GQL231K-2R2Y	GQL231K-2R2Y	GGR0779-001
CN620	GQF1205F1-22	GQF1205F1-22	GQF1205F1-22	GQF1205F1-22	GQF1205F1-24	GQF1205F1-22	GQF1205F1-24

DVD servo section

LVA10228-A1

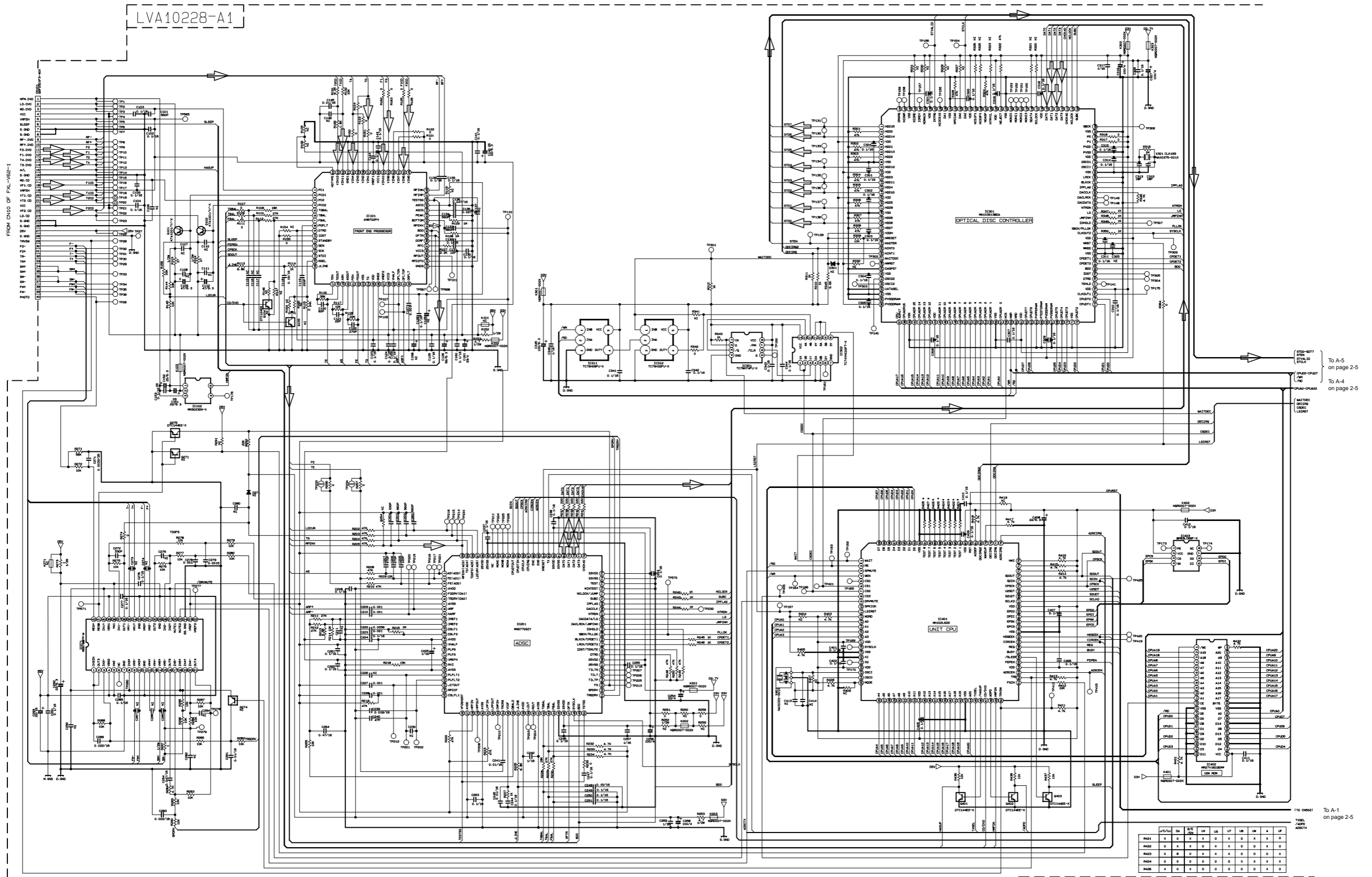
5

4

3

2

1



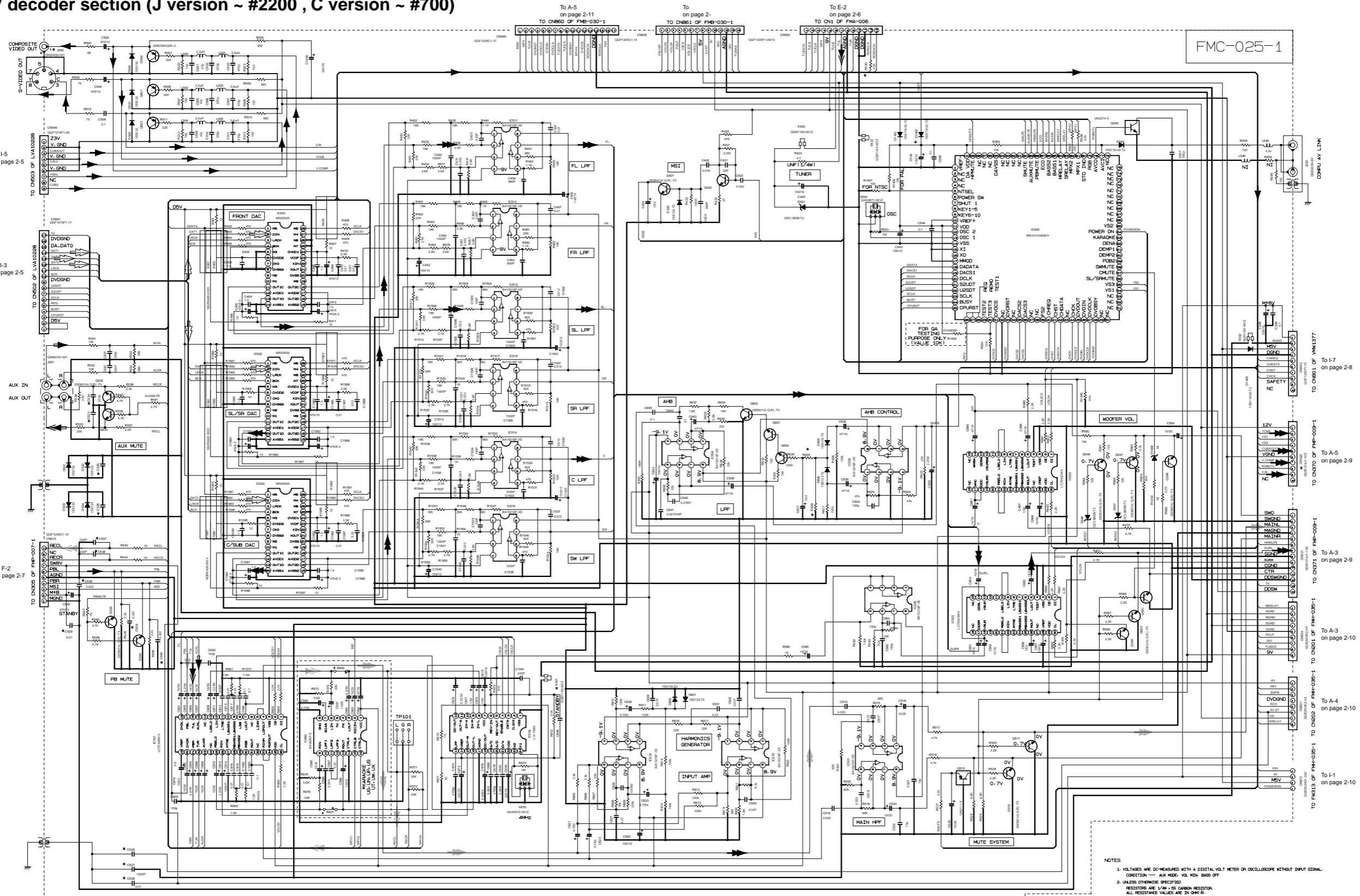
To A-5
on page 2-5

To A-4
on page 2-5

To A-1
on page 2-5

	U/C	U/D	U/X	U/L	U/T	U/M	U/A	U/P
RA01	X	0	X	0	X	0	X	0
RA02	0	X	0	0	X	0	0	X
RA03	0	0	0	0	X	0	0	X
RA04	X	0	0	0	0	X	X	X
RA05	X	0	0	0	0	0	0	X

AV decoder section (J version ~ #2200 , C version ~ #700)



NOTES
 1. VOLTAGES ARE DC-MEASURED WITH A DIGITAL VOLT METER OR OSCILLOSCOPE WITHOUT INPUT SIGNAL.
 CONNECTION -- AIR NODE VOL WITH BIAS OFF.
 2. UNLESS OTHERWISE SPECIFIED
 RESISTORS ARE 1/4W ± 5% CARBON RESISTOR.
 ALL RESISTANCE VALUES ARE IN OHMS.
 ALL CAPACITORS ARE CERAMIC CAPACITOR OR MYLAR CAPACITOR.
 ALL CAPACITANCE VALUES ARE IN PICO (P).
 ALL INDUCTANCE VALUES ARE IN MICRO (M).
 ALL S-CAPACITORS ARE SHOWN IN THE FORM OF CAPACITANCE (MFD/PARALLEL VOL).
 ALL CODES ARE 165133

MODEL	J/C/UJ	B/E/EN/EE	A	U(EXCEPT UJ&UJ)	UT
REF NUMBER	USE	NONE	NONE	USE	USE
CN500	NONE	USE	NONE	NONE	NONE
R530	NONE	USE	NONE	NONE	NONE
C537/C538/C539/ C540/C528/C530/ C527/C528	NONE	USE	USE	NONE	USE
KARAOKE	NONE	NONE	NONE	USE	USE
R1400	USE	USE	USE	USE	USE
R1401	USE	NONE	NONE	NONE	NONE
K421	NONE	USE	USE	NONE	USE

MODEL	J/C/UJ	B/E/EN/EE	A	U(EXCEPT UJ&UJ)	UT
REF NUMBER	USE	NONE	USE	NONE	NONE
R628	NONE	USE	USE	NONE	NONE
R629	2.2K	2.2K	2.2K	2.2K	2.2K
R630	0.033(UJ-D.022)	0.022M	0.022M	0.022M	0.022M
C535/C536	100P(UJ-2200P)	2200P	2200P	2200P	2200P

- Digital audio signal
- Video signal
- Tuner signal
- Tape PB signal
- Tape REC signal
- Aux input signal
- Aux output signal
- Surround signal
- Main signal

Parts are safety assurance parts.
 When replacing those parts make sure to use the specified one.

5

4

3

2

1

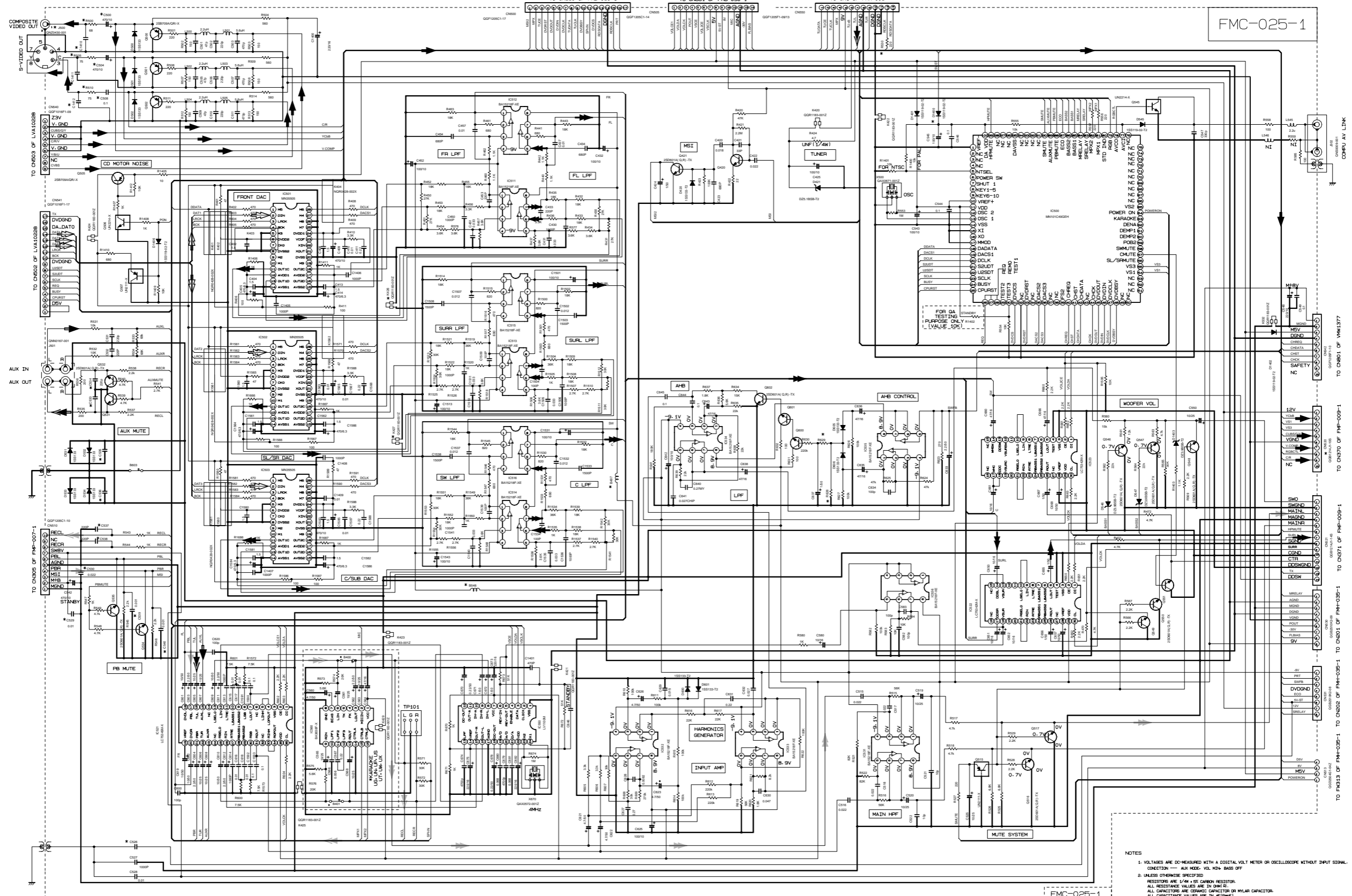
AV decoder section (J version #2201 ~ C version #701 ~)

MX-DVA9

MX-DVA9

FMC-025-1

5
4
3
2
1



MARK

MODEL	J/C/UJ	B/E/EN/EE	A	U(EXCEPT UT&UJ)	UT
J500	NONE	NONE	USE	USE	USE
C530	USE	NONE	NONE	NONE	NONE
R530	NONE	USE	NONE	NONE	NONE
C537/C538/C539/	NONE	USE	USE	NONE	USE
C540/C536/C530/	NONE	USE	USE	NONE	USE
KARAOKE	NONE	NONE	NONE	USE	USE
R1400	NONE	USE	NONE	USE	USE
R1401	USE	NONE	NONE	NONE	NONE
C1410/11/12	UJ147D1	NONE	47D	47D	47D

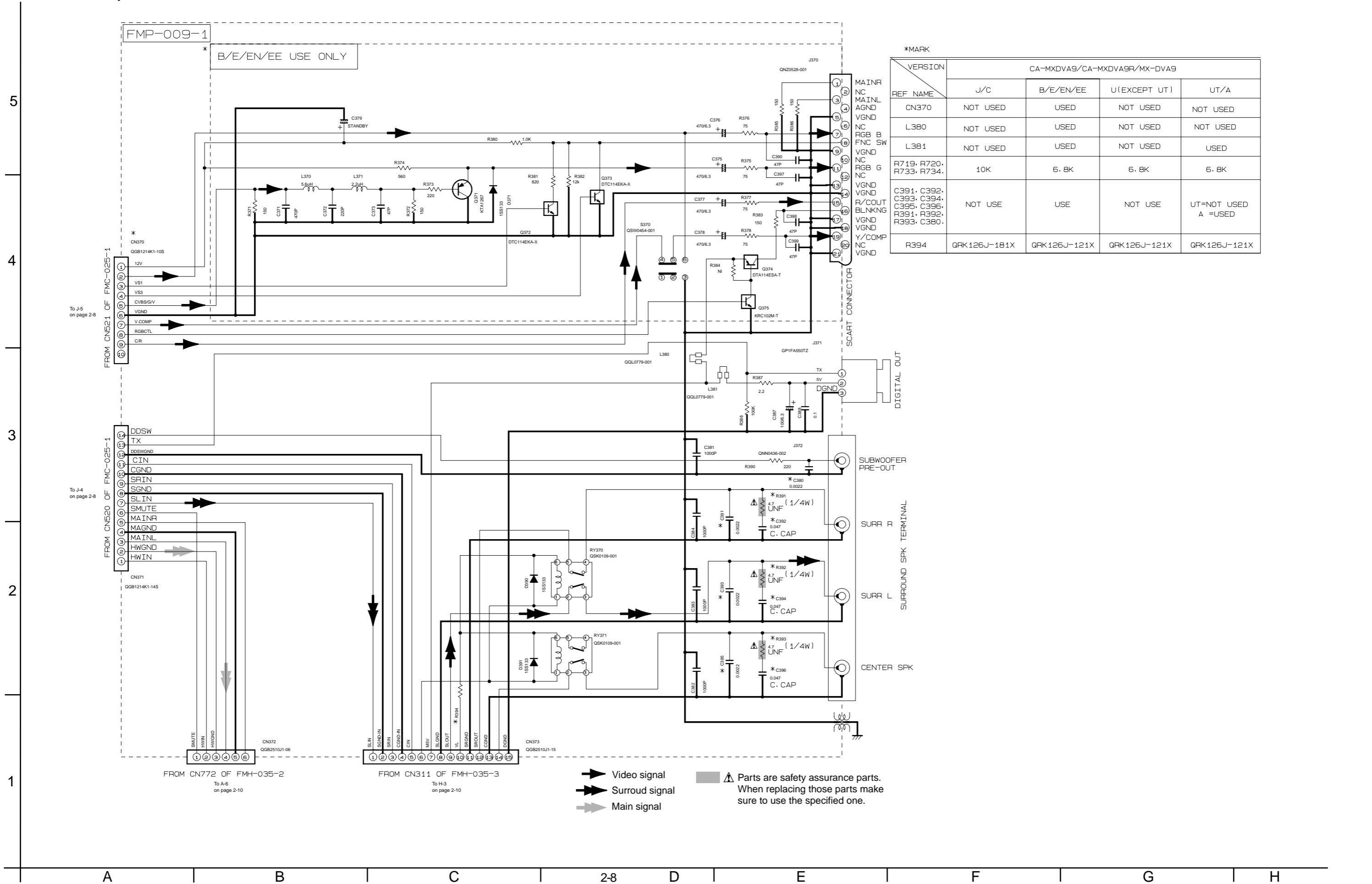
MODEL	J/C/UJ	B/E/EN/EE	A	U(EXCEPT UT&UJ)	UT
D1400	NONE	USE	USE	NONE	NONE
R509	R5K	R5K	R5K	50K	50K
R520	2.2K	2.2K	2.2K	10K	10K
C526	0.03(UJ-0.022)	0.022M	0.022M	0.022M	0.022M
C535/C536	100P(UJ-2200P)	2200P	2200P	2200P	2200P
R500-C500	USE	NONE	USE	USE	USE
R505-C504	USE	NONE	USE	USE	USE
R510-C508	USE	NONE	USE	USE	USE
B603	UJ(USED)	USE	USE	USE	USE

MODEL	J/C/UJ	B/E/EN/EE	A	U(EXCEPT UT&UJ)	UT
K425-K427	UJ(NONE)	NONE	NONE	NONE	NONE
B407	2.2uH(UJ-7.5mm)	QUY158-075Y	QUY158-075Y	2.2uH	2.2uH
B548	2.2uH(UJ-10mm)	QUY158-100Y	QUY158-100Y	2.2uH	2.2uH

- Digital audio signal
- Video signal
- Tuner signal
- Tape PB signal
- Tape REC signal
- Aux input signal
- Aux output signal
- Surround signal
- Main signal

NOTES
 1. VOLTAGES ARE DC-MEASURED WITH A DIGITAL VOLT METER OR OSCILLOSCOPE WITHOUT INPUT SIGNAL.
 CONDITION — AUX MODE: VOL MEN: BASS OFF
 2. VALUES OTHERWISE SPECIFIED
 RESISTORS ARE 1/4W ± 5% CARBON RESISTOR.
 ALL RESISTANCE VALUES ARE IN OHMS Ω.
 ALL CAPACITORS ARE CERAMIC CAPACITOR OR MYLAR CAPACITOR.
 ALL CAPACITANCE VALUES ARE IN PICO-FARAD (PF).
 ALL INDUCTANCE VALUES ARE IN MICROHENRY (μH).
 ALL ELECTROLYTIC CAPACITORS ARE SHOWN IN THE FORM OF CAPACITANCE (μF)/RATED VOLTAGE (V).
 ALL DIMENSIONS ARE IN MILLIMETERS (MM).
 ALL DIMENSIONS ARE 155133

AV output section



*MARK

VERSION	CA-MXDVA9/CA-MXDVA9R/MX-DVA9			
	J/C	B/E/EN/EE	U (EXCEPT UT)	UT/A
REF NAME				
CN370	NOT USED	USED	NOT USED	NOT USED
L380	NOT USED	USED	NOT USED	NOT USED
L381	NOT USED	USED	NOT USED	USED
R719, R720, R733, R734.	10K	6.8K	6.8K	6.8K
C391, C392, C393, C394, C395, C396, R391, R392, R393, C380.	NOT USE	USE	NOT USE	UT=NOT USED A =USED
R394	GRK126J-181X	GRK126J-121X	GRK126J-121X	GRK126J-121X

Video signal
 Surround signal
 Main signal
 Parts are safety assurance parts. When replacing those parts make sure to use the specified one.

CD changer control section

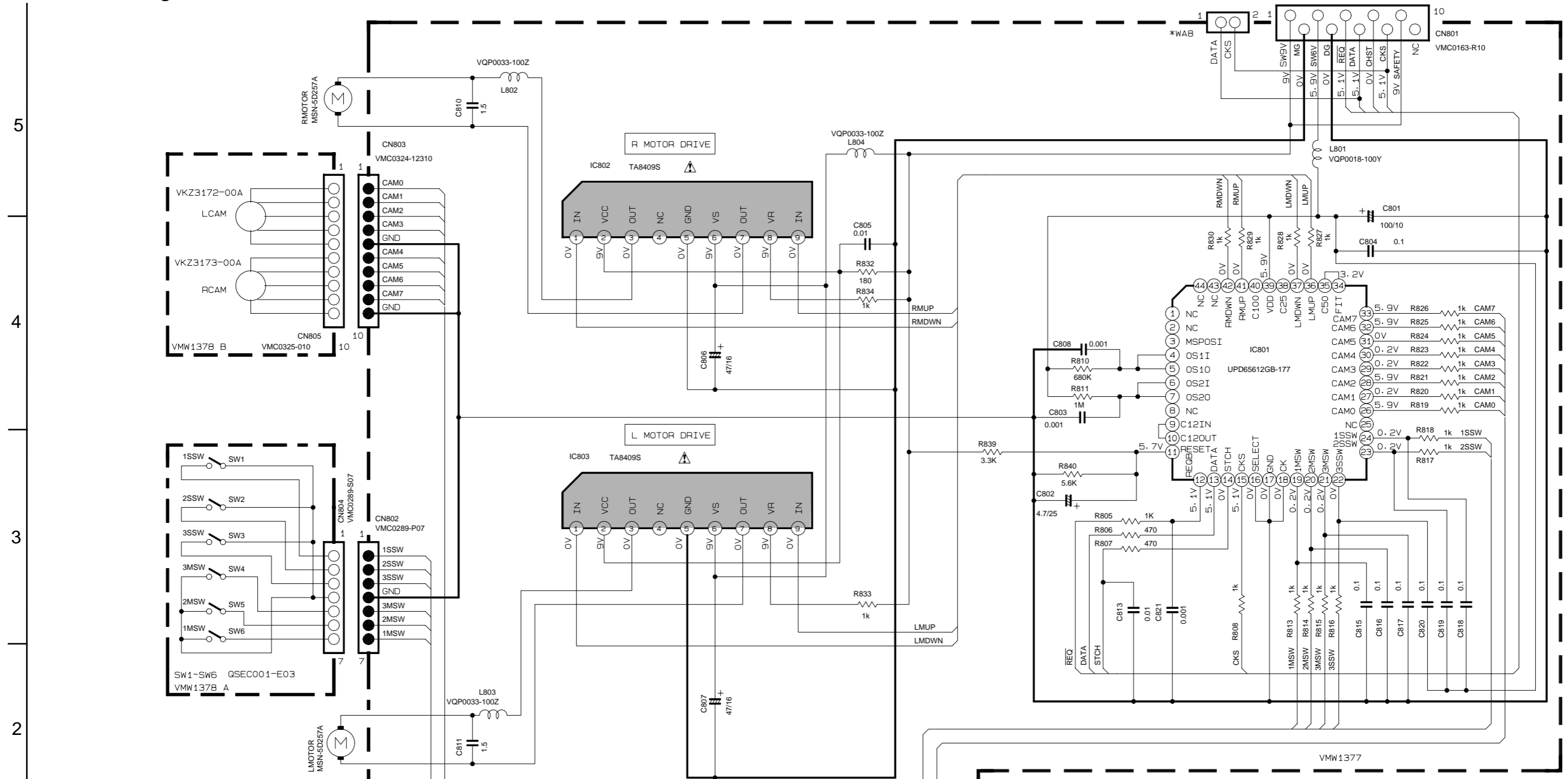


TABLE 1 CAM PATTERN LIST

CAM NO.	LCAM			RCAM			POSITION		
	0	1	2	3	4	5		6	7
MAIN TRAY1	0	1	1	1	0	1	1	0	EMERGENCY
SUB TRAY1	0	0	1	1	0	1	1	0	TRAY1 STAND-BY
CAMR 1	0	1	0	1	0	1	0	1	TRAY1 CHACKING
MAIN TRAY2	1	0	0	1	0	1	0	1	TRAY2 STAND-BY
SUB TRAY2	1	1	1	0	0	1	1	1	TRAY2 CHACKING
CAMR 2	1	0	1	0	0	1	0	1	TRAY3 STAND-BY
MAIN TRAY3	1	1	0	0	0	0	1	1	TRAY3 CHACKING
SUB TRAY3	1	0	0	0					
OFF	1	1	1	1	0	1	1	1	OFF

0=0V
1=5V

NOTES

- VOLTAGES ARE DC-MEASURED WITH A DIGITAL VOLT METER OR OSCILLOSCOPE WITHOUT INPUT SIGNAL. CONDITION --- DISC 1 CD STOP MODE.
- UNLESS OTHERWISE SPECIFIED, RESISTORS ARE 1/6W ±5% CARBON RESISTOR. ALL RESISTANCE VALUES ARE IN OHM(Ω). ALL CAPACITORS ARE CERAMIC CAPACITOR OR MYLAR CAPACITOR. ALL CAPACITANCE VALUES ARE IN μF(P=pF). ALL INDUCTANCE VALUES ARE IN μH(m=mH). ALL E-CAPACITORS ARE SHOWN IN THE FORM OF CAPACITANCE (μF)/RATED VOLTAGE (V).

- UNFLAMMABLE CARBON RESISTOR
- METAL FILM RESISTOR
- OXIDE METAL FILM RESISTOR
- ±20% LOW LEAK CURRENT ELECTROLYTIC CAPACITOR
- NON-POLARISED ELECTROLYTIC CAPACITOR
- POLYPROPYLENE CAPACITOR
- POLYSTYROL CAPACITOR

Parts are safety assurance parts. When replacing those parts make sure to use the specified one.

1

3

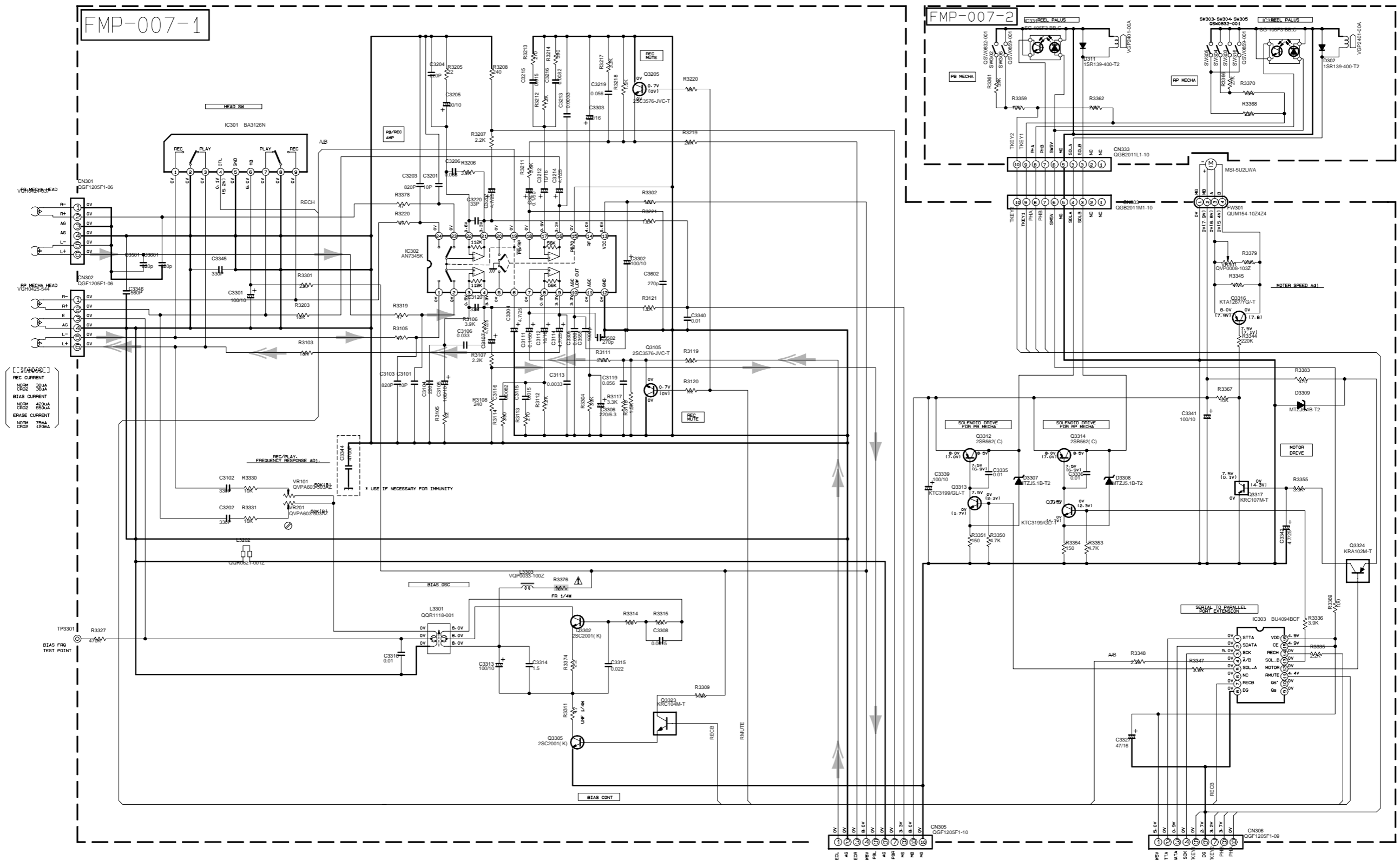
4

5

■ Cassette amp section

CASSETTE MECHA CONTROL CIRCUIT [SLC]

5
4
3
2
1



REC CURRENT
NORM 300A
CHRG 300A
BIAS CURRENT
NORM 2500A
CHRG 6000A
ERASE CURRENT
NORM 750A
CHRG 1200A

- NOTES**
1. VOLTAGES ARE DC-MEASURED WITH A DIGITAL VOLT METER OR OSCILLOSCOPE WITHOUT INPUT SIGNAL. () IS INVERT MODE
 2. UNLESS OTHERWISE SPECIFIED
 ALL RESISTANCE VALUES ARE IN OHM(Ω).
 ALL CAPACITORS ARE CERAMIC CAPACITOR
 ALL CAPACITANCE VALUES ARE IN μF(μF).
 ALL INDUCTANCE VALUES ARE IN mH(mH).
 ALL E-CAPACITORS ARE SHOWN IN THE FORM OF CAPACITANCE (μF)/RATED VOLTAGE (V).
 PP POLYPROPYLENE CAPACITOR

➔ Tape PB signal
 ➔➔ Tape REC signal

⚠ Parts are safety assurance parts.
 When replacing those parts make sure to use the specified one.

FROM CN315 OF FMC-022-1

FROM CN316 OF FMB-028-1

To A-3
on page 2-8

To D-1
on page 2-11

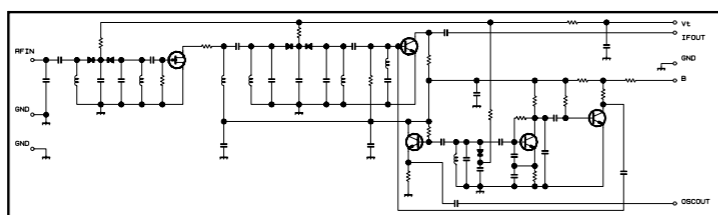
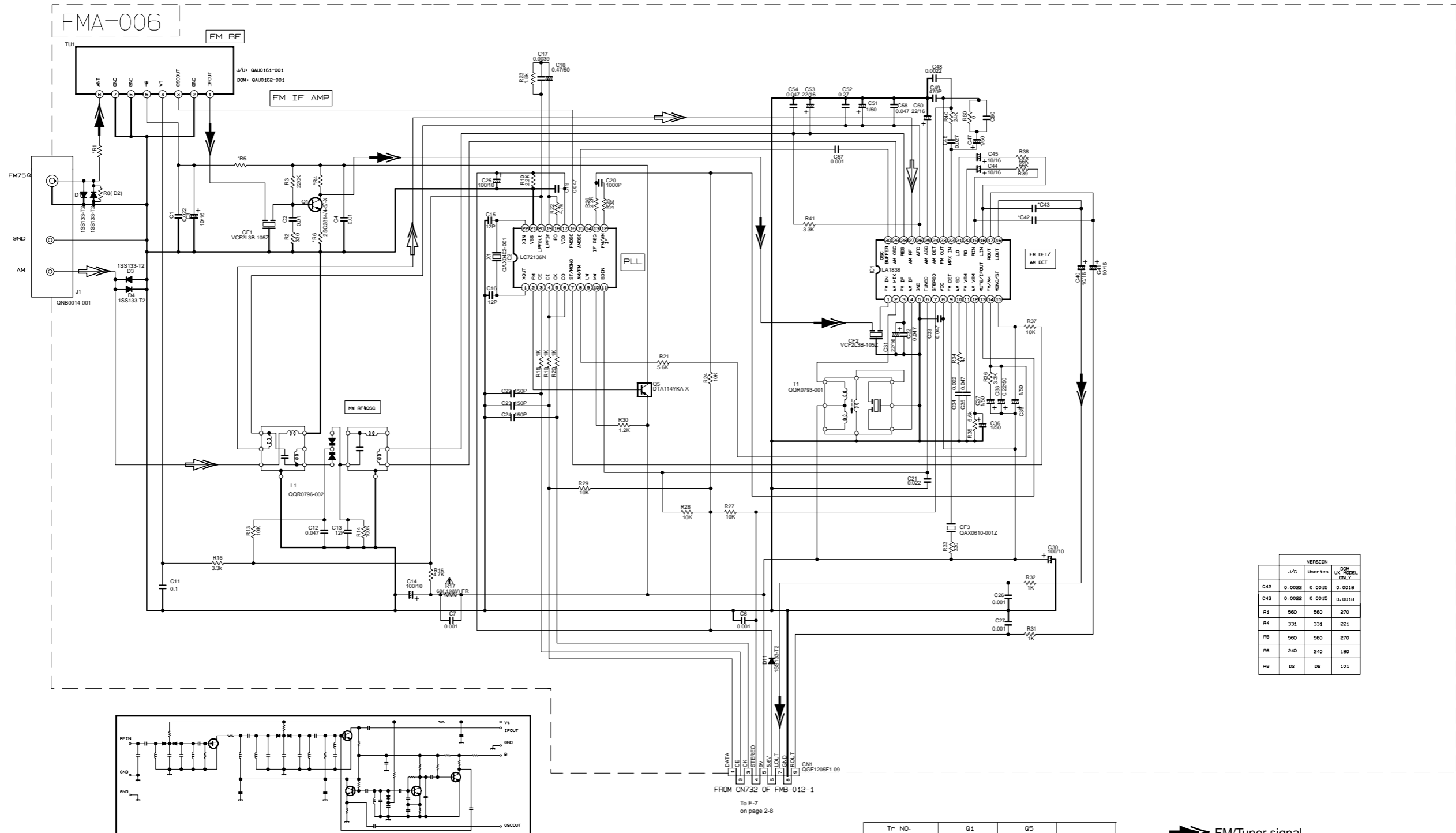
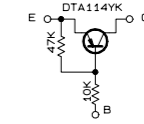
A B C 2-10 D E F G H

Tuner section

NOTES

1. VOLTAGES ARE DC-MEASURED WITH A DIGITAL VOLT METER.
2. ALL RESISTORS ARE 1/8W ±5% METAL GLAZE RESISTOR.
3. ALL RESISTANCE VALUES ARE IN OHM(Ω).
4. ALL CAPASITANCE VALUES ARE IN μF(P=pF).
5. ALL E. CAPASITORS ARE SHOWN IN THE FORM OF CAPASITANCE (μF)/RATED VOLTAGE (V).
6. SI DIODES (D) ARE ALL 1SS133-T THAT CAN BE CHANGED TO SIMILAR DIODE SUCH AS MA165 OR HSS104J.
7. PARTS NO. OF TRANSISTORS ARE AS FOLLOWS:
 Q1 2SC2814/4-5/-X Q2, Q3 2SC2412K/R/-X
 Q4, Q5 DTA114YKA-X

8. INSIDE OF DIGITAL TRANSISTORS ARE SHOWN AS FOLLOWS.



REV	VERSION	
	J/C	DM LX MODEL
C42	0.0022	0.0015 0.0018
C43	0.0022	0.0015 0.0018
R1	560	560 270
R4	331	331 221
R5	560	560 270
R6	240	240 180
R8	D2	D2 101

CONDITION	PIN NO.	1	2	3	4	5	6	7	8	9	10	11	12	13	14	15	16	17	18	19	20	21	22	23	24	25	26	27	28	29	30
IC1	FM 60dB STEREO	3.6	8.9	3.6	3.6	0	5.0	5.0	8.9	8.9	1.3	0.1	0	0.9	7.8	7.8	4.3	4.3	4.3	4.3	3.4	3.4	2.8	3.4	0	0	3.5	3.5	3.6	3.6	2.7
IC2	FM NO SIGNAL	3.5	9.0	3.5	3.5	0	5.0	5.1	9.0	2.6	1.3	0	0	0.9	4.7	5.5	4.3	4.3	4.3	4.3	3.3	3.2	2.8	ubst	0.7	0.7	3.6	3.6	3.6	3.6	2.1

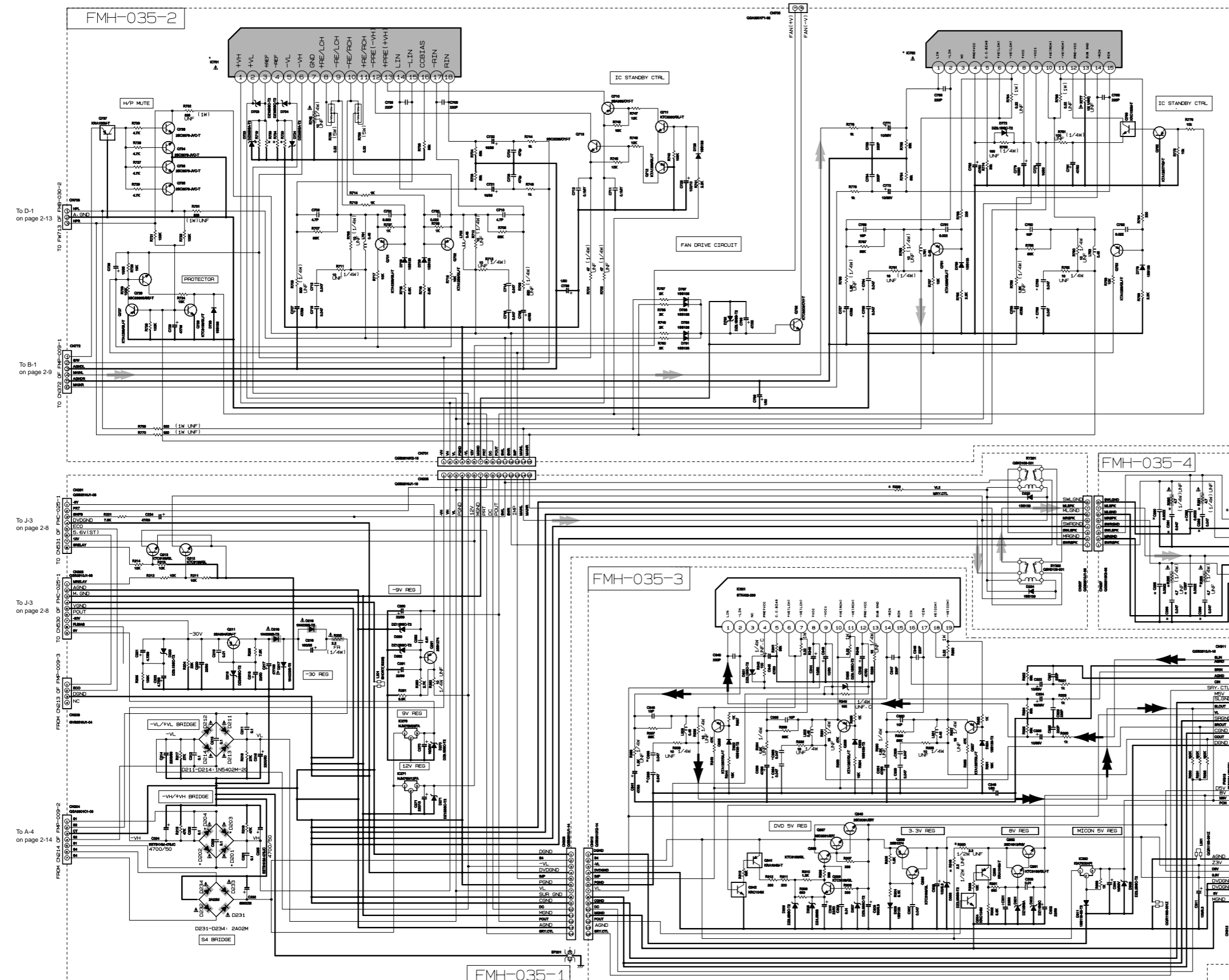
Tr NO.	Q1			Q5		
PIN NO.	E	C	B	E	C	B
FM 87.5MHz NO SIGNAL	0	7.1	0.85	8.9	8.8	0
AM 52KHz NO SIGNAL	0	0	0	9.0	0	8.9

Tr NO.	Q2			Q3			Q4		
PIN NO.	E	C	B	E	C	B	E	C	B
AM 52KHz NO SIGNAL	0	0	0.7	0	0	0.7	0	3.6	0.7
AM 144KHz NO SIGNAL	0	0	0.3	0	0.3	0.3	3.6	3.6	3.6

FM/Tuner signal
 AM signal
 Parts are safety assurance parts. When replacing those parts make sure to use the specified one.

5
4
3
2
1

Power amp section



#MARK

VERSION	J/C	A/B/E/EN/EE	UG/J/JN/UP	UT
IC701	STK412-000	STK412-090	STK412-090	STK412-090
IC752	STK402-050	STK402-040	STK402-040	STK402-040
R220	GRK126J-1B1X	GRK126J-121X	GRK126J-121X	GRK126J-121X
R719, R720, R733, R734	10K	6.8K	6.8K	6.8K
C890, C891, C892, C893, R890, R891, C897, C898, R892, R893	NOT USE	USE	NOT USE	USE
R862	GR23005-100X	B227	B227	B227
R318, R320	USE	NOT USE	NOT USE	NOT USE
V280	GN80107-002	GN80107-001	GN80107-001	GN80107-001
D201, D202, D203, D204	30DF2-FC	1N5402M-20	1N5402M-20	1N5402M-20

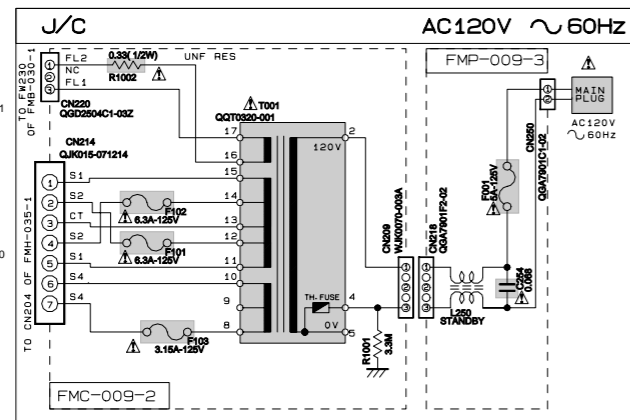
Surround signal
 Main signal
 Parts are safety assurance parts. When replacing those parts make sure to use the specified one.

5
4
3
2
1

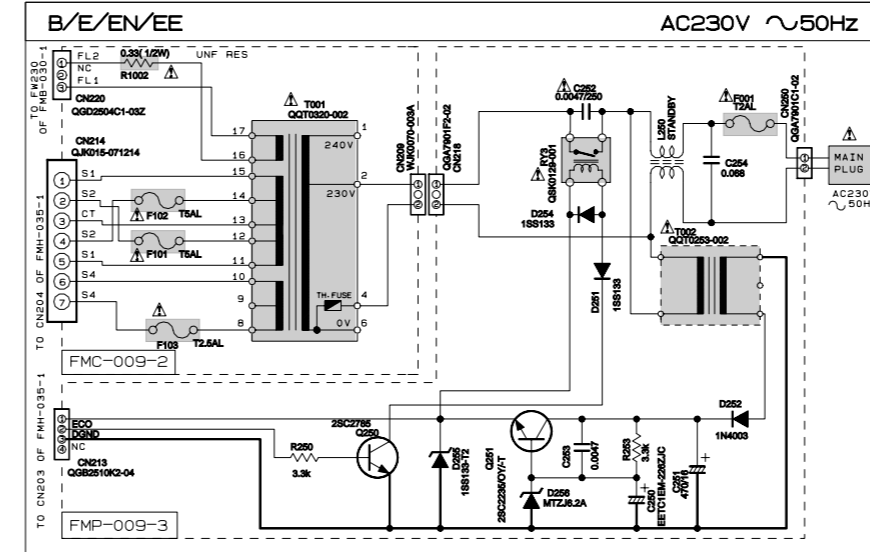
A B C 2-12 D E F G H

Trans all section

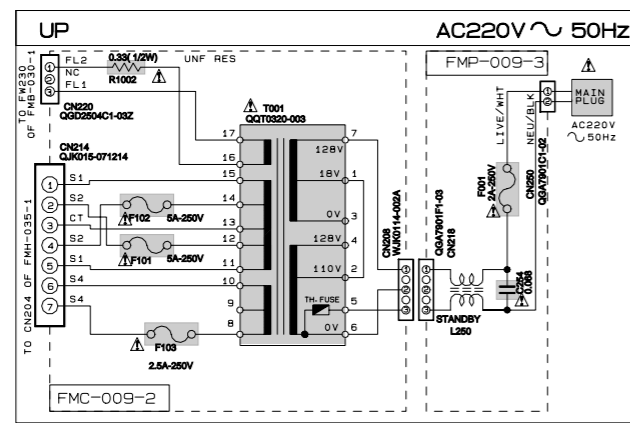
POWER SUPPLY BLOCK



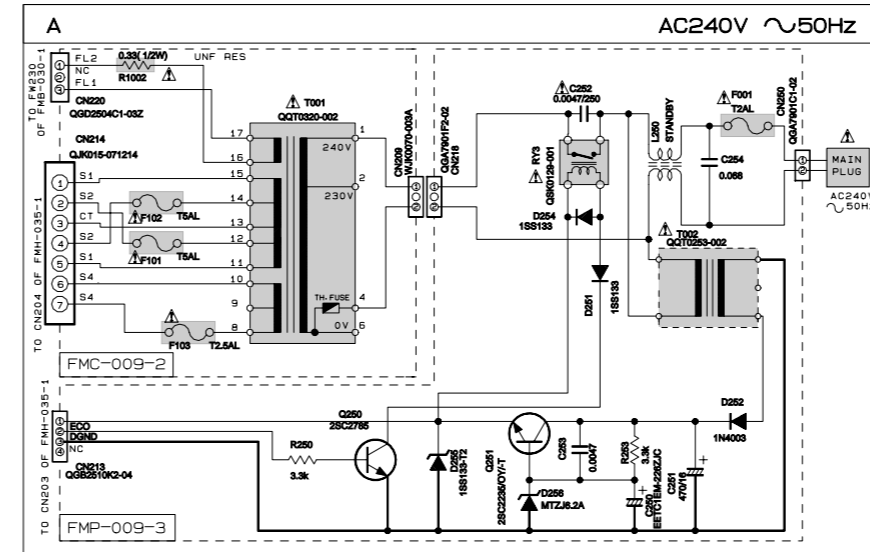
POWER SUPPLY BLOCK



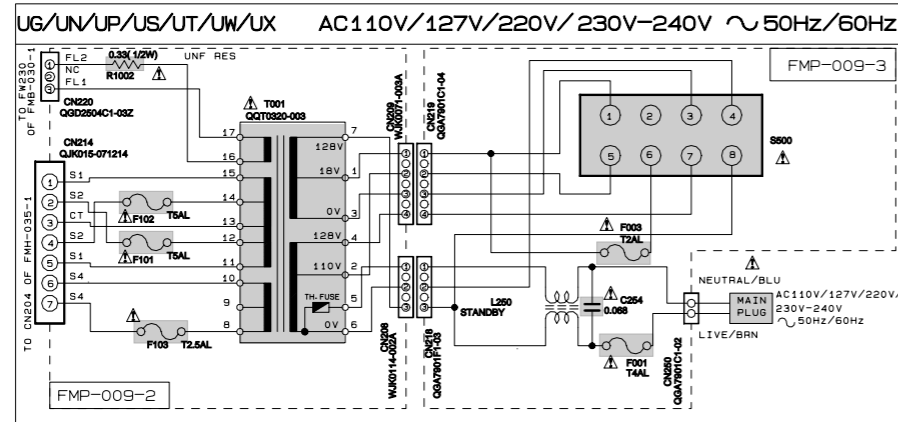
POWER SUPPLY BLOCK



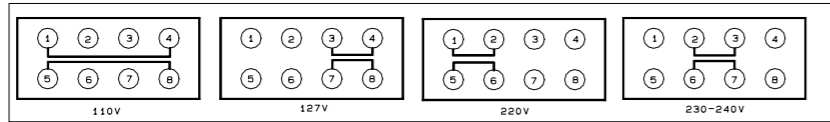
POWER SUPPLY BLOCK



POWER SUPPLY BLOCK



VOLTAGE SELECTOR LOCATION



EXPLANATION OF OVERALL OF SCHEMA.

MODEL MX-DVA9/MX-DVA9R		
SHEET NUMBER	MODEL NUMBERS TO BE APPLIED	CIRCUITS DESCRIPTION
1/13	MX-DVA9/MX-DVA9R	. PRIMARY WITH MAINS TRANSFORMER
2/12	MX-DVA9/MX-DVA9R	. DC REGULATORS/AUDIO OUTPUT
3/13	MX-DVA9/MX-DVA9R	. AUDIO SIGNAL FLOW AND PROCESSING
4/13	MX-DVA9/MX-DVA9R	. FL DISPLAYS, SYSTEM CONTROL LSI
5/13	MX-DVA9/MX-DVA9R	. USER CONTROL KEYS, MIC AMP
6/13	MX-DVA9/MX-DVA9R	. CONNECTION BOARD FOR SIGNAL AND FAN HOLDER
7/13	MX-DVA9/MX-DVA9R	. TAPE DECK MECHANISM CONTROL . TAPE CIRCUITS SUCH AS PRE-AMP AND BIAS
8/13	MX-DVA9R	. TUNER RF/IF/FM MULTIPLEX (ONLY FOR A, B, E, EN, EV)
9/13	MX-DVA9R	. TUNER RF/IF/FM MULTIPLEX (ONLY FOR EE)
10/13	MX-DVA9	. TUNER RF/IF/FM MULTIPLEX (ONLY FOR C, J, UP, UJ, US, UT, UW, UX, UY)
11/13	MX-DVA9/MX-DVA9R	. DVD MECHA SYSTEM CONTROL AND SERVO SYSTEM
12/13	MX-DVA9/MX-DVA9R	. MPEG BOARD SYSTEM MICON AND OPT DISC CTRL
13/13	MX-DVA9/MX-DVA9R	. MPEG BOARD AV DECODER

VERSION CODES

- J : U.S.A.
- C : CANADA
- B : U.K.
- E : CONTINENTAL EUROPE
- EE : RUSSIA
- EN : NORDIC COUNTRIES
- EV : EASTERN EUROPE
- A : AUSTRALIA
- UJ : MILITARY
- UP : KOREA
- UT : TAIWAN
- UX : SAUDI ARABIA
- UY : ARGENTINA
- UW : SOUTH AMERICA EXCEPT ARGENTINA
- US : SINGAPORE AND UNIVERSAL EXCEPT ALL OF ABOVE

Parts are safety assurance parts. When replacing those parts make sure to use the specified one.

Printed circuit boards

■ DVD Servo control section

5

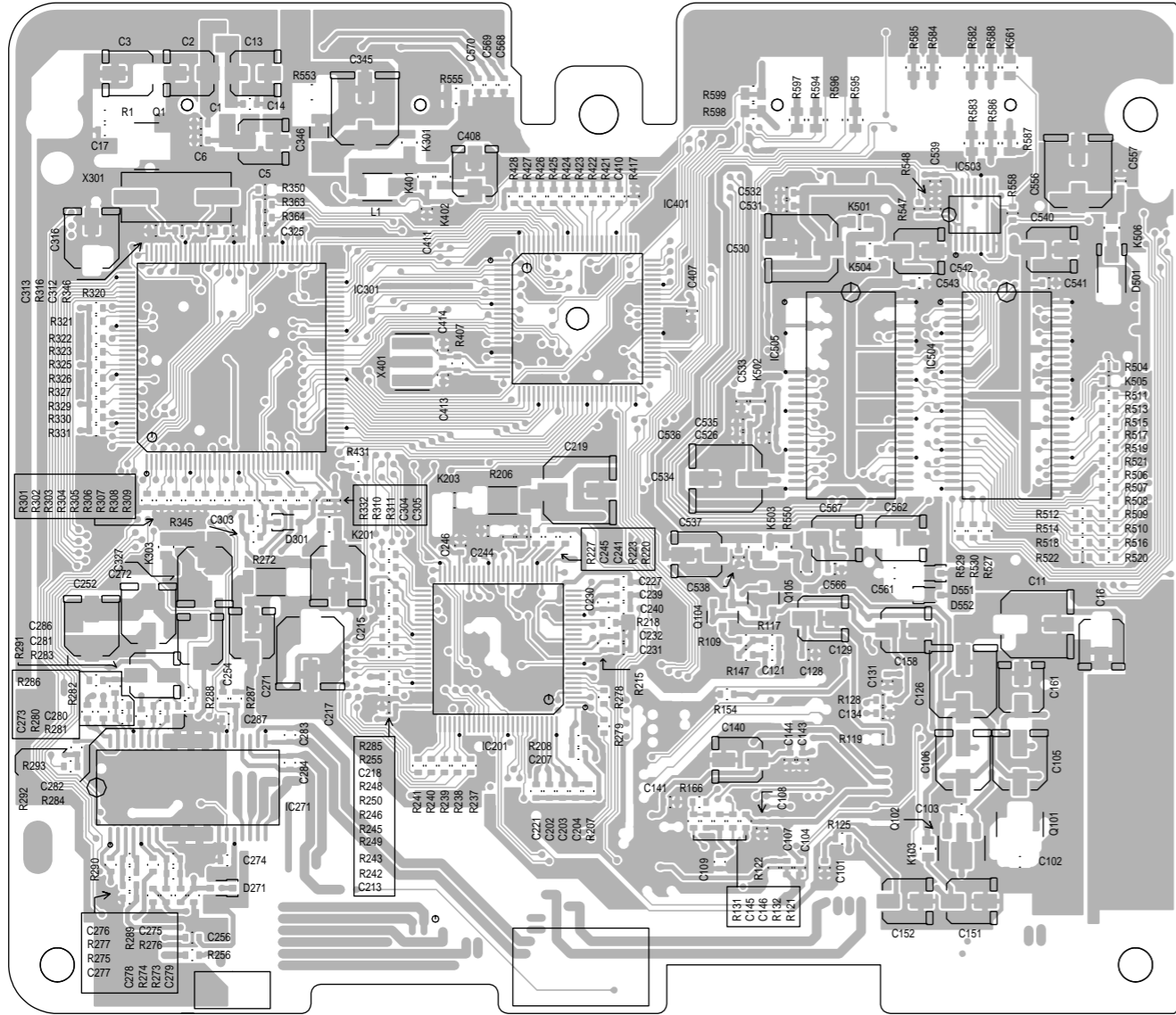
4

3

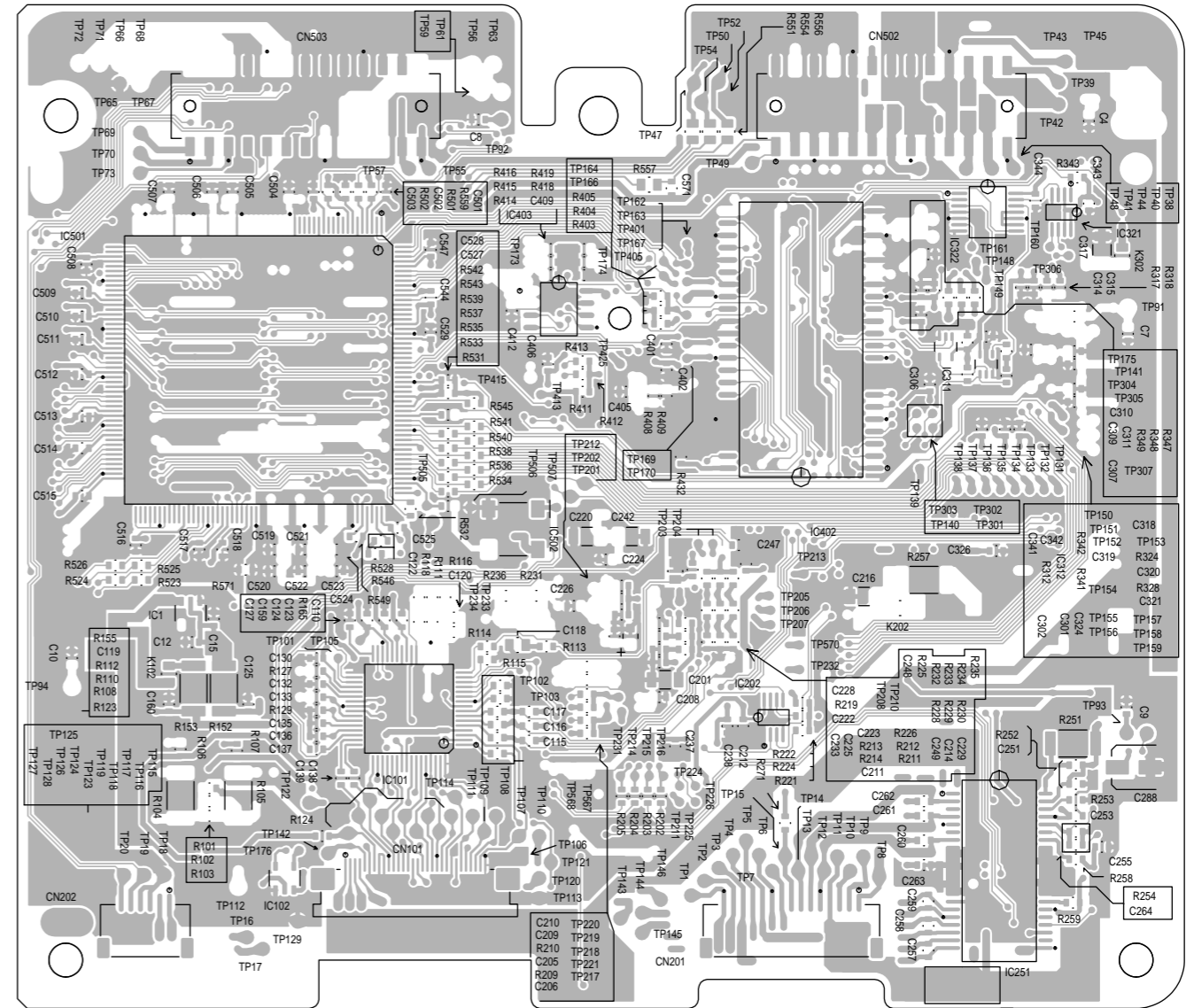
2

1

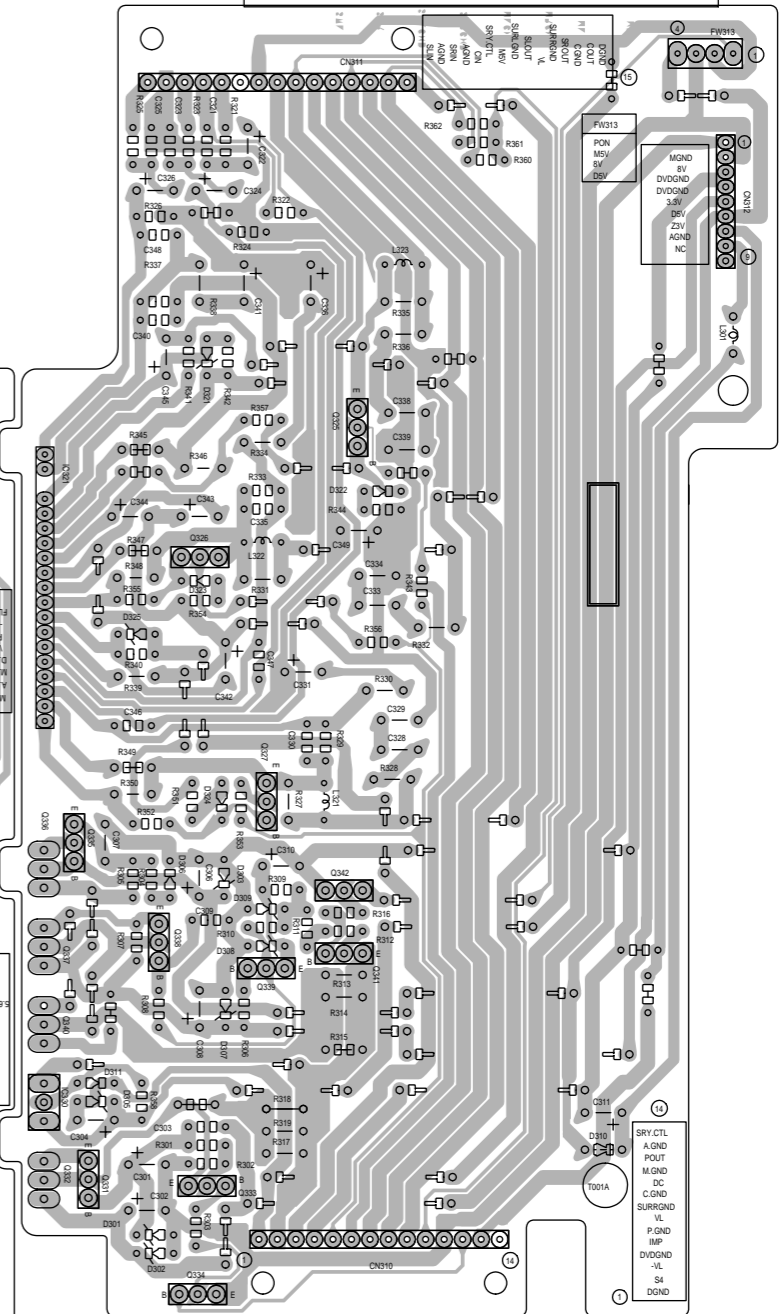
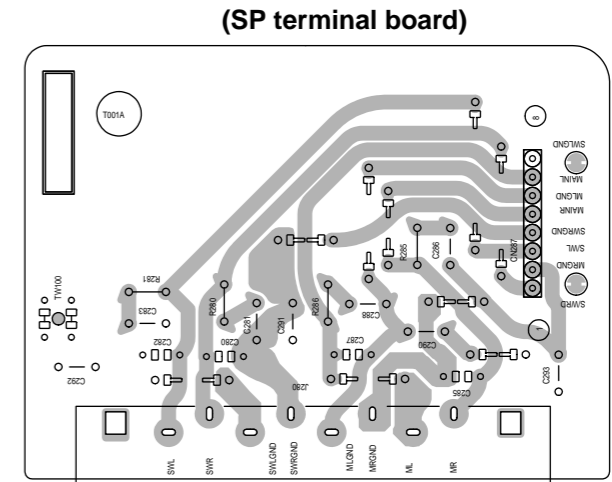
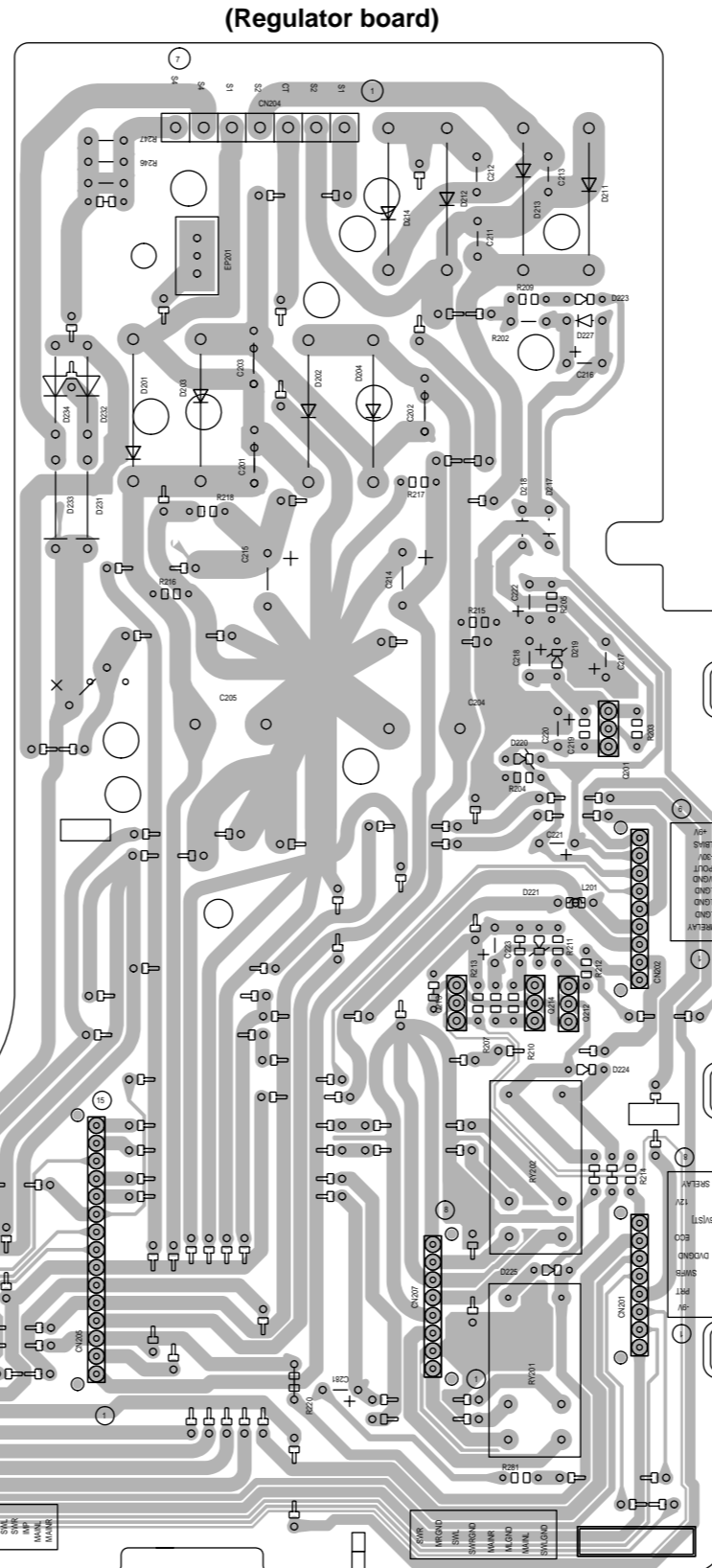
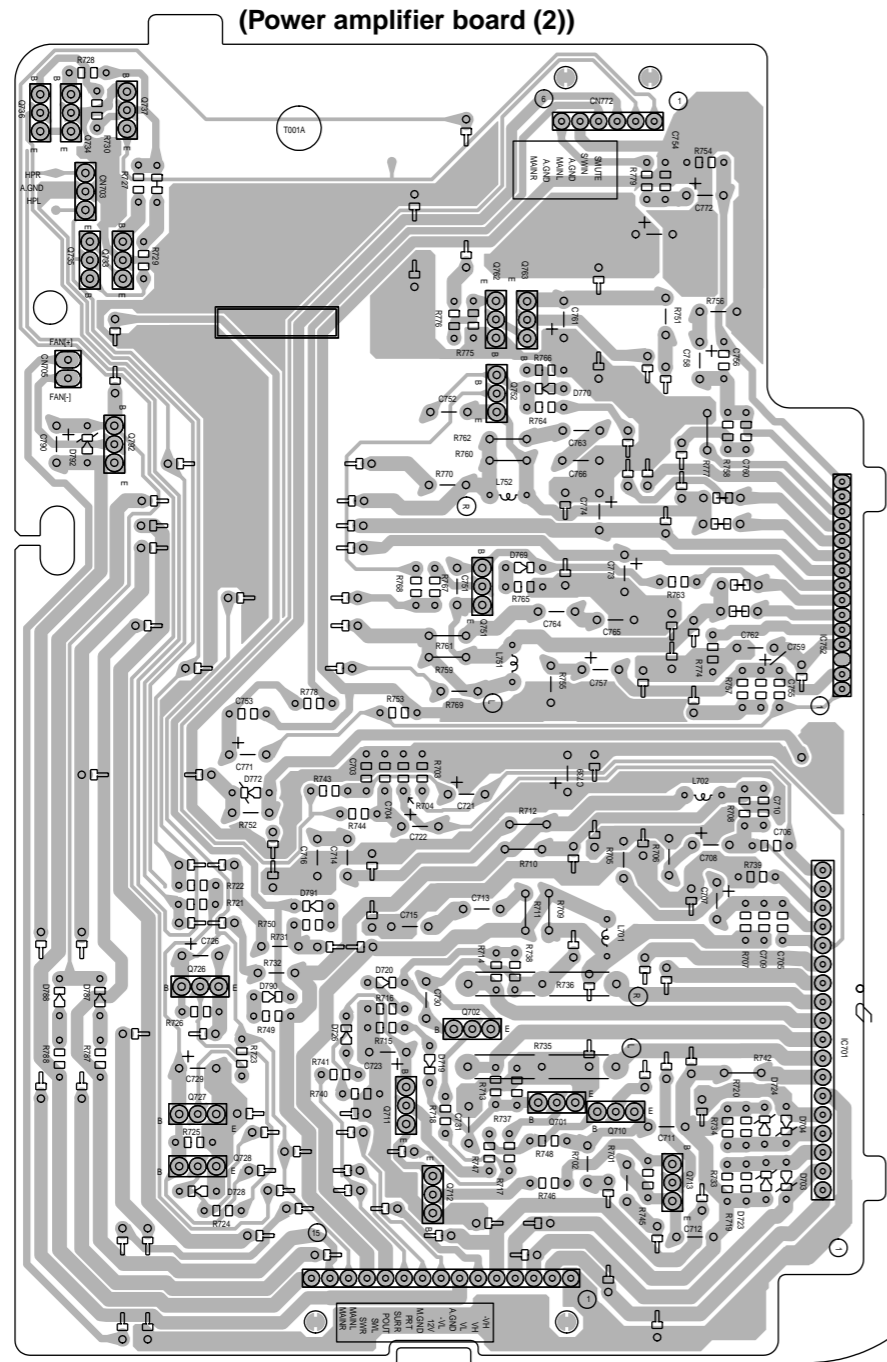
Forward side



Reverse side



■ Main section



5

4

3

2

1

A

B

C

D

E

F

G

■ Micon section

(Display system control board)

(Operation switch board)

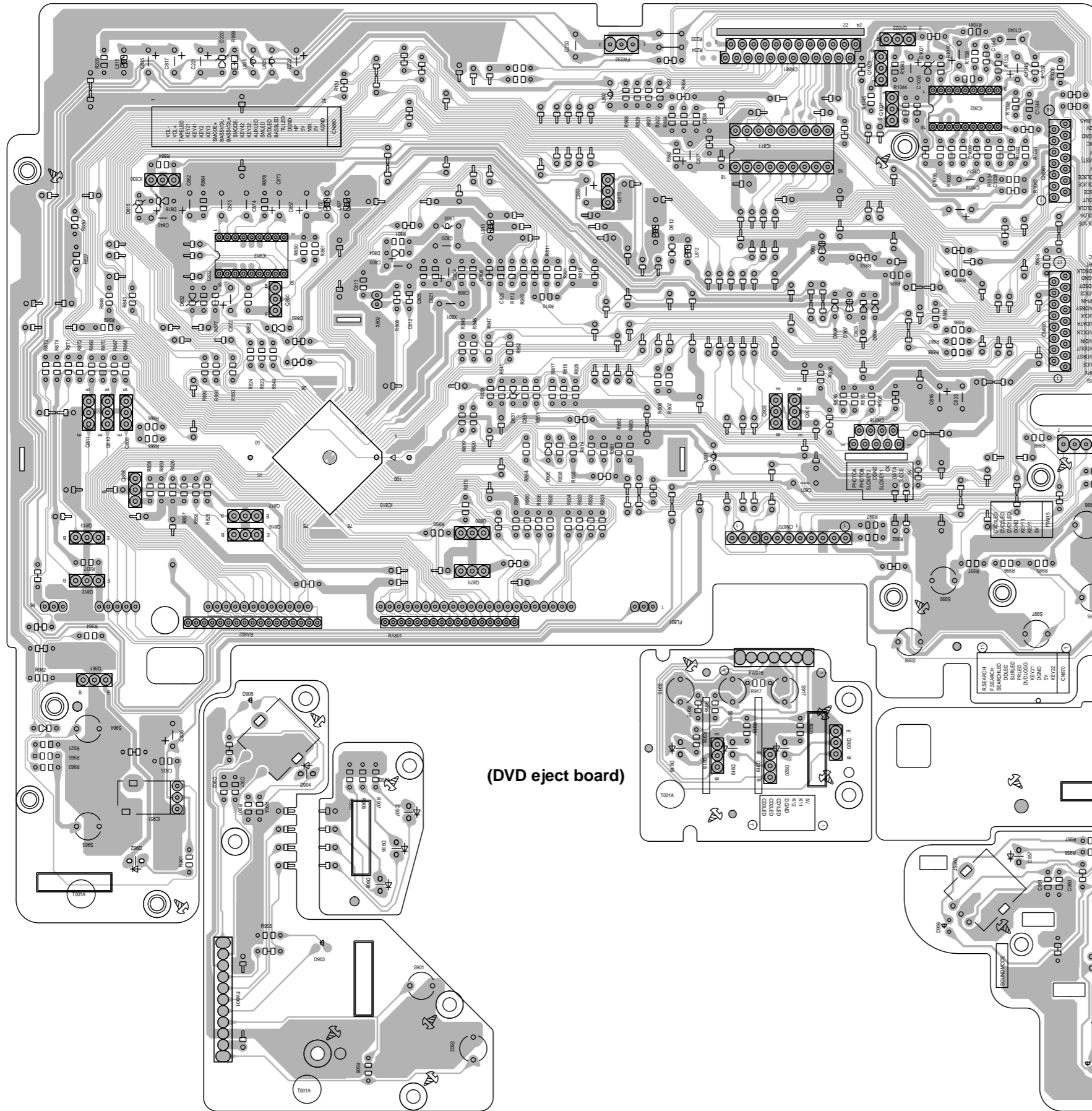
5

4

3

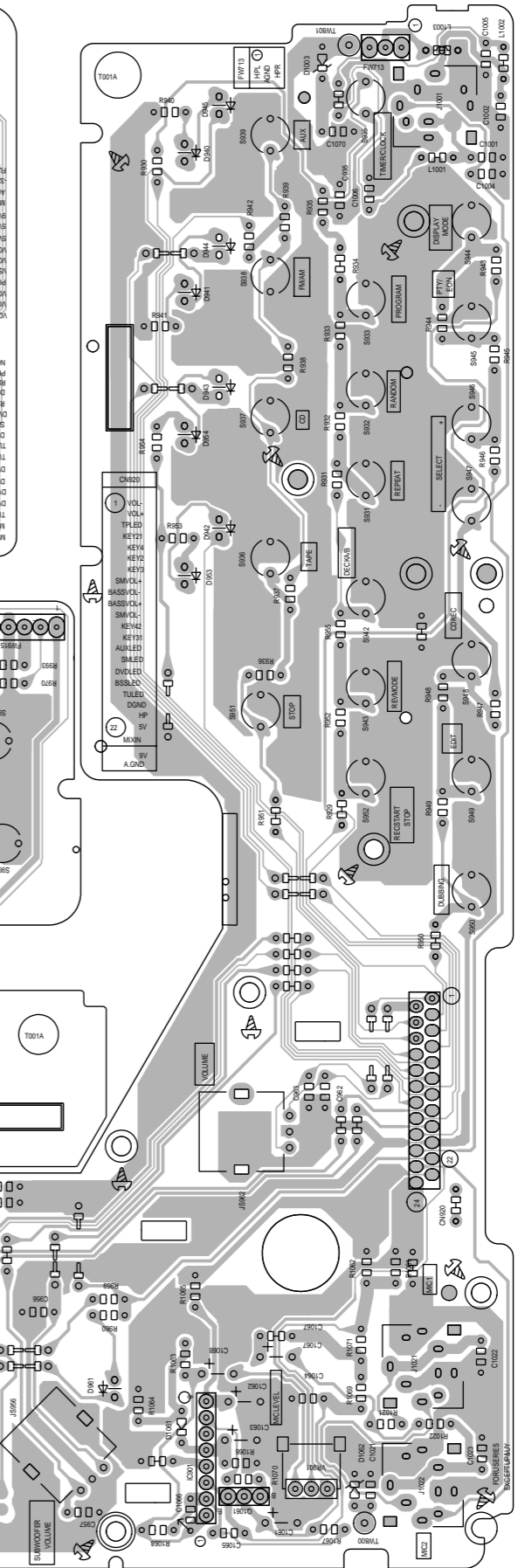
2

1



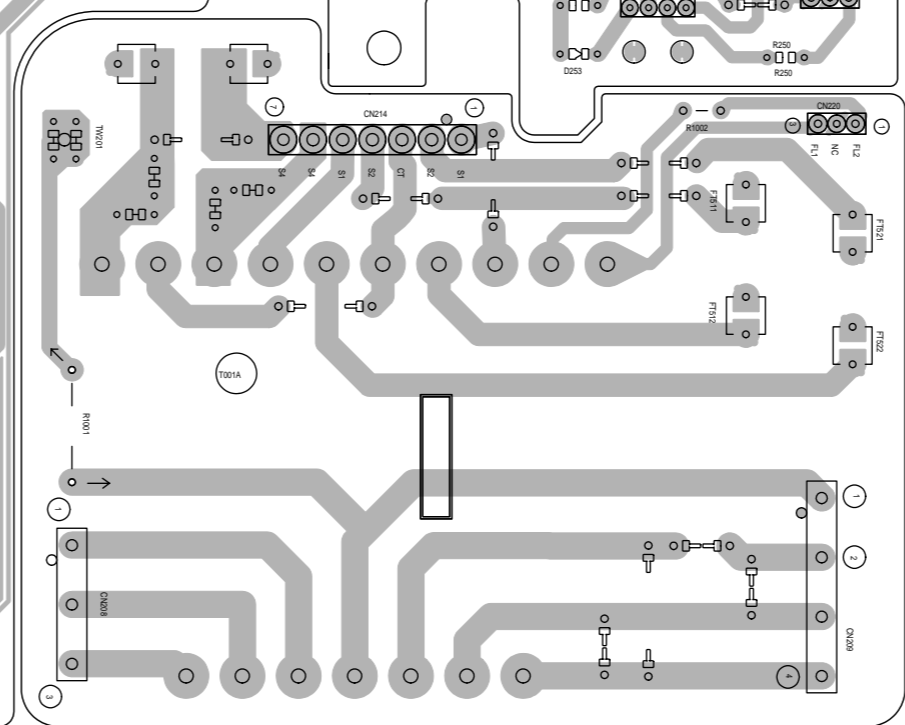
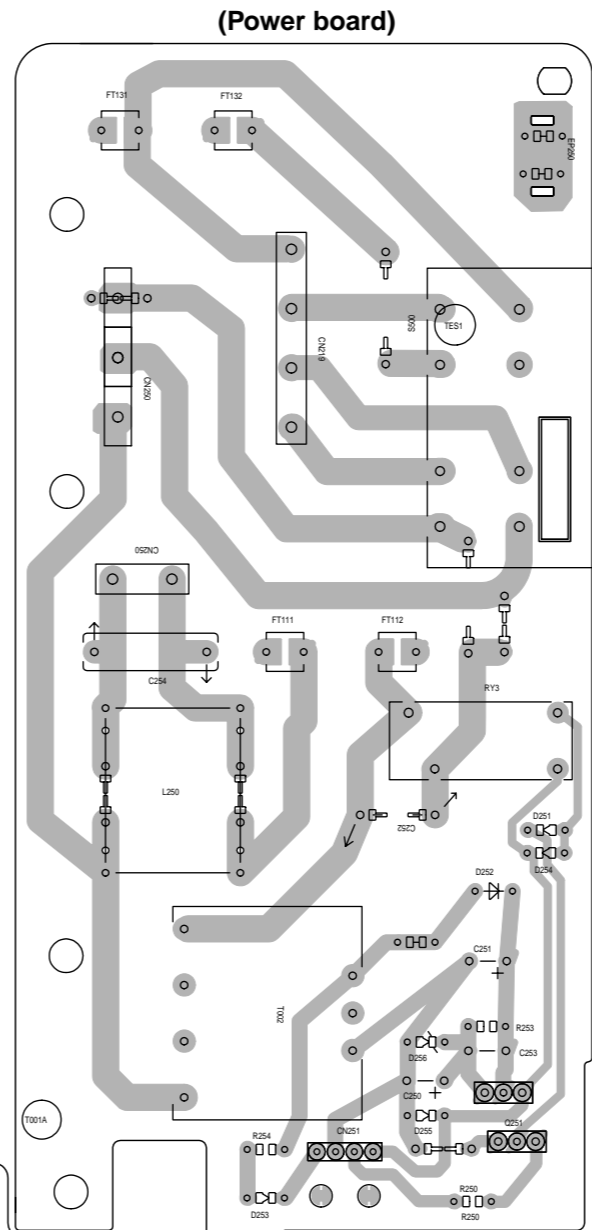
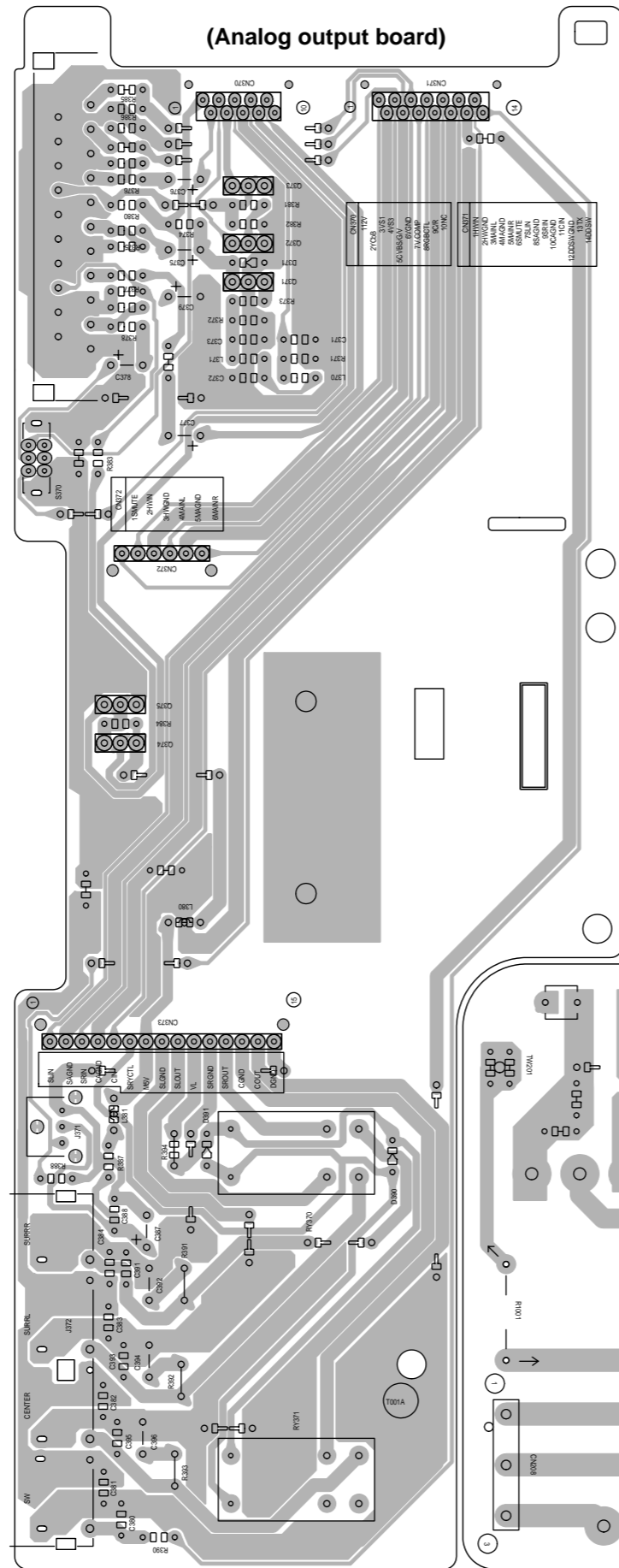
(DVD eject board)

(Preset/tuning switch board)



■ Primary section

5
4
3
2
1



A B C D E F G 2-17

■ Tuner section

■ Cassette section

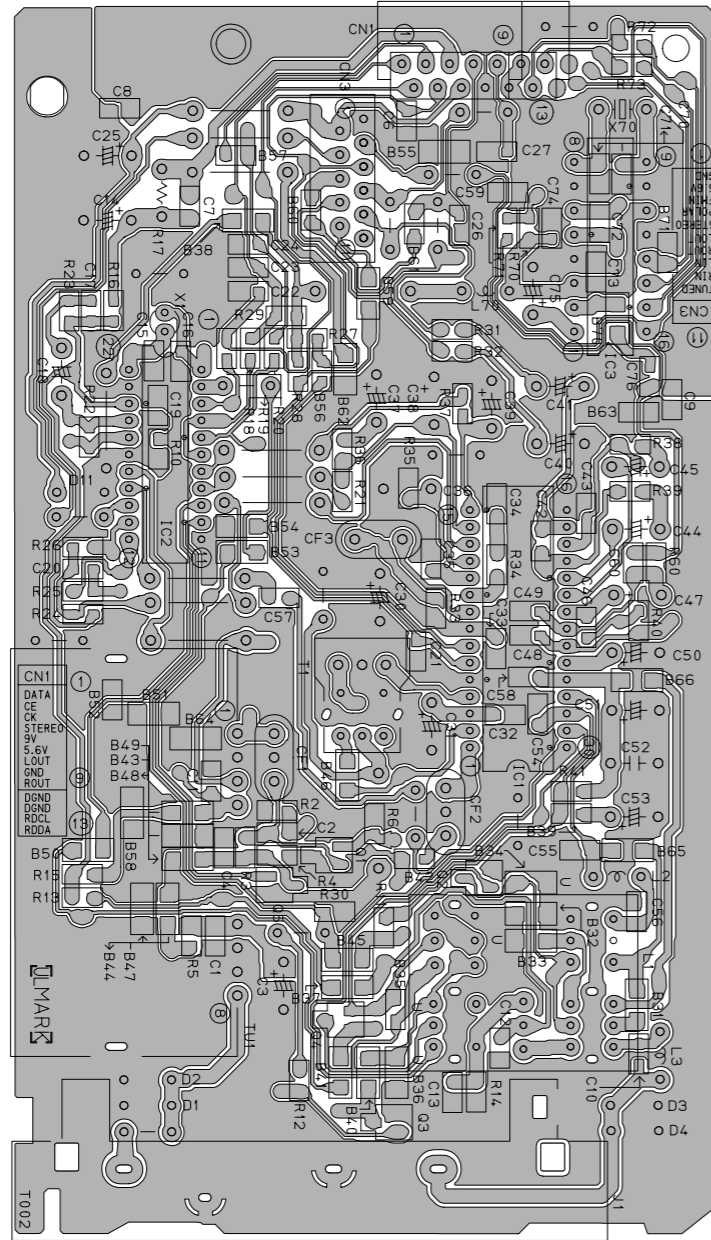
5

4

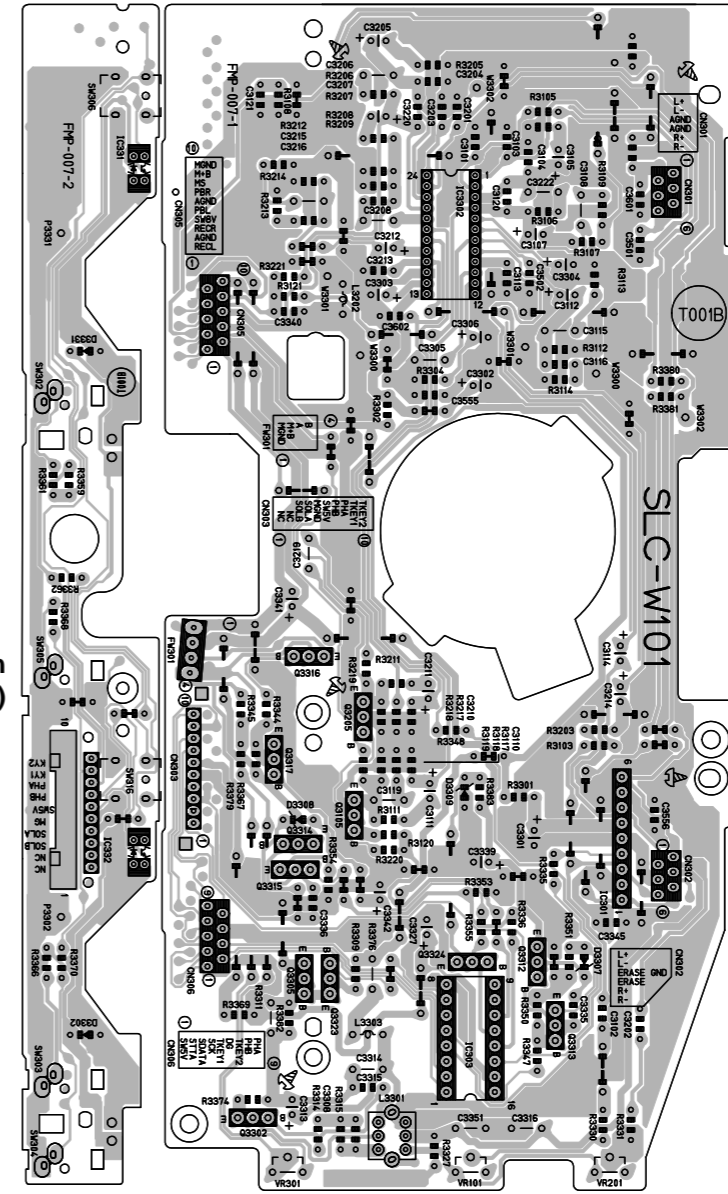
3

2

1



(Head amplifier & mechanism board)



(Cassette switch board)

-MEMO-